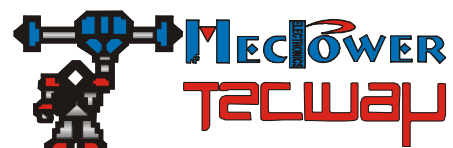


In order to prevent the variety of problems which caused by incorrect operation, Please read the manual first before operating this machine and pay attention to the items marked in “note”. Please keep this manual carefully for checking when needed.

### Summary

- ✧ Transportation, installation, safe operation of moving and operating methods and attentions;
- ✧ Installation and operation;
- ✧ Function adjustment;
  
- ✧ Maintenance;
- ✧ General troubleshooting and solutions;
- ✧ Main components diagram;
- ✧ Circuit connection diagram.

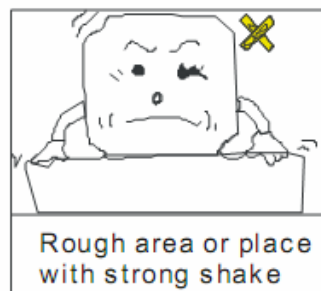
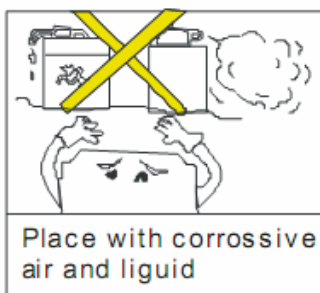
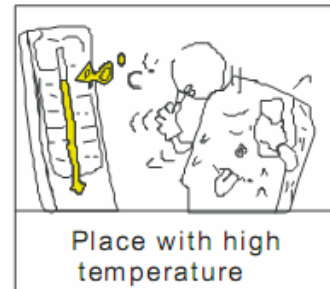
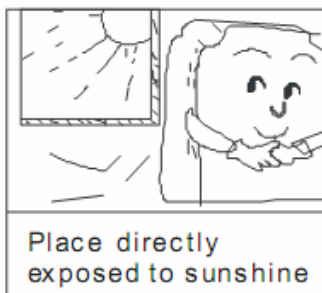


## Safety Attentions

- 1) Certain part of the game is with high voltage. Adjust the game by technician. Do not open the game door unless maintenance or parts replacement is required.
- 2) Please switch off the power before checking and maintenance.
- 3) Please switch off the power before opening the game door.
- 4) Fire extinguisher equipment must be nearby the game.

## Installation

The game must be located properly to avoid damages.  
Improper Locations:



## Notes of Usage

- 1) The voltage range of the game should be 105V ~ 115V/215V ~ 225V. The proper voltage should be 110V/220V. The specific voltage accords to the date plate on the back door of the game. The voltage must be correct; otherwise it would be difficult to repair the damage.
- 2) The plug must be plugged in tightly and keep the power cords not be too tight and damaged in order to prevent bodily injury, short-circuit and power leakage.
- 3) To put the machine to normal operating, please properly adjust the coin match and the game settings when use at the first time.
- 4) Please regularly check all the functions of the game when operate to prevent dysfunction.

## Notes of Maintenance

- 1) Be sure to check and maintenance the game regularly.
- 2) Switch off the power before replacing the parts of the game.
- 3) The parts for replacement should be the same model as the old one.
- 4) Please check the connection and voltage output after replacing the power supply.
- 5) The voltage range of the PCB should be 5.1V ~ 5.4V
- 6) Check whether the game has creepage and the voltage before repairing the PCB.

## **Notes of Clean**

- 1) Please use clean and soft cloth to clean the game.
- 2) Prevent damaging the surface of the game, please do not use the following cleanser:
  - Alterative Cleanser;
  - Acidic Cleanser;
  - Insecticide, sterilized water, alcohol or other chemical cleanser.

## **Notes of Moving and Shipping**

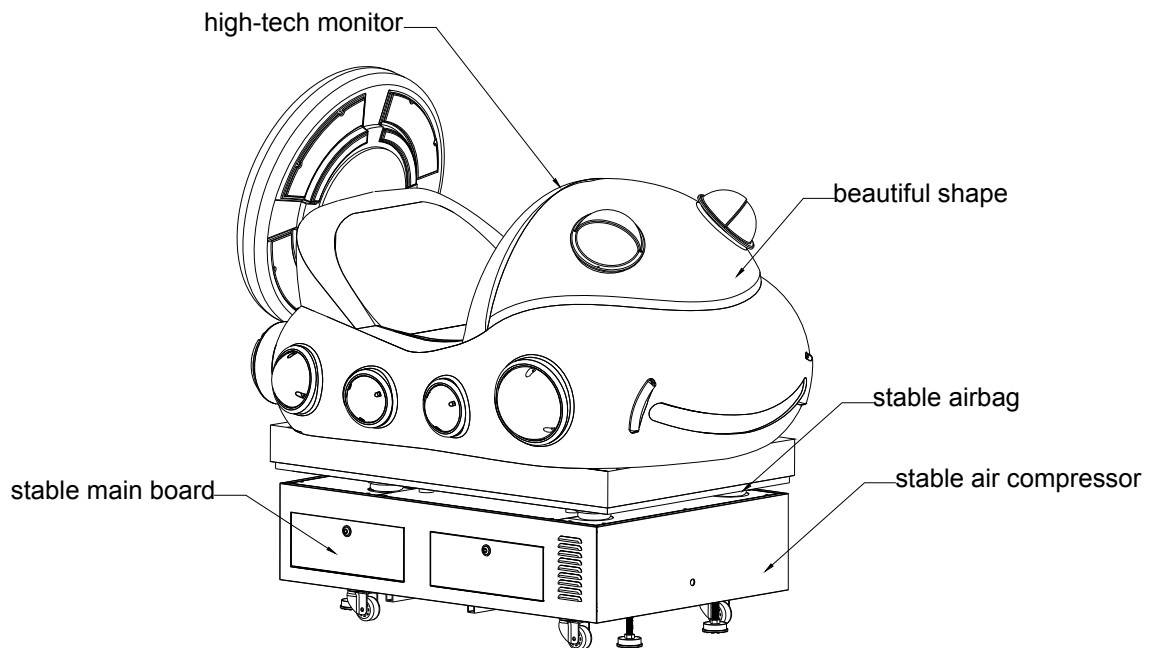
- 1) Properly disassemble the game for necessary moving and shipping.
- 2) Prevent the game from hitting or being attrite during movement.
- 3) Protecting the case when move the game.

# CONTENT

1、	<b>GAME INTRODUCTION</b> .....	错误! 未定义书签。
2、	<b>PLAYING TIPS AND OPERATIONS</b> .....	错误! 未定义书签。
3、	<b>TECHNICAL PARAMETER</b> .....	错误! 未定义书签。
4、	<b>MOVEMENT</b> .....	错误! 未定义书签。
5、	<b>INSTALLATION</b> .....	错误! 未定义书签。
5.1	CHOOSE THE LOCATION FOR INSTALLATION ..	错误! 未定义书签。
5.2	CHECK AND SET BEFORE CONNECTING THE POWER	错误! 未定义书签。
5.3	CHECK AND ADJUST AFTER CONNECTING THE POWER	错误! 未定义书签。
6、	<b>CHECK BEFORE OPERATION</b> .....	错误! 未定义书签。
7、	<b>DAILY OPERATION</b> .....	错误! 未定义书签。
7.1	INPUT POWER TO OPERATE .....	错误! 未定义书签。
7.2	CHECK AFTER OPERATION .....	错误! 未定义书签。
7.3	COLLECT COINS AND KEEP RECORD .....	错误! 未定义书签。
8、	<b>GAME SETTING</b> .....	错误! 未定义书签。
8.1	KEYS FOR SETTING .....	错误! 未定义书签。
8.2	SETTING METHOD .....	错误! 未定义书签。
8.3	SETTING DESCRIPTION .....	错误! 未定义书签。
9、	<b>ADJUSTMENT</b> .....	错误! 未定义书签。
9.1	ADJUST THE COIN MECH .....	错误! 未定义书签。
9.2	MAIN BOARD ADJUSTMENT .....	错误! 未定义书签。
10、	<b>CHECK AND MAINTAIN</b> .....	错误! 未定义书签。
10.1	DAILY CHECK .....	错误! 未定义书签。
10.2	DAILY MAINTAIN .....	错误! 未定义书签。
11、	<b>TROUBLESHOOTING</b> .....	错误! 未定义书签。
12、	<b>DIAGRAM FOR MAIN PARTS AND PARTS LIST</b> .....	21
12.1	BODY .....	22
12.2	CABINET .....	错误! 未定义书签。
12.3	CIRCUIT BOARD .....	24
12.4	CHASSIS .....	25
13、	<b>CIRCUIT DIAGRAM</b> .....	错误! 未定义书签。
14、	<b>SCHEMATIC DIAGRAM</b> .....	28
15、	<b>AFTER-SALES OPERATION MANUAL</b> .....	错误! 未定义书签。

## 1. Game introduction

Nimo Boat with unique, beautiful and comic appearance, interesting and exciting game, it is specially designed and developed by our company for the young people. It will be very essential and popular in amusement center.



### Features:

Realistic, colorful, cutty outlook

Integarated main board, high-speed processing CUP, stable proformance.

High definition, high-quality LCD display.

Coin mech with high quality fits for various coins.

Simple, stimulating, strong operational sense and full of entertaining.

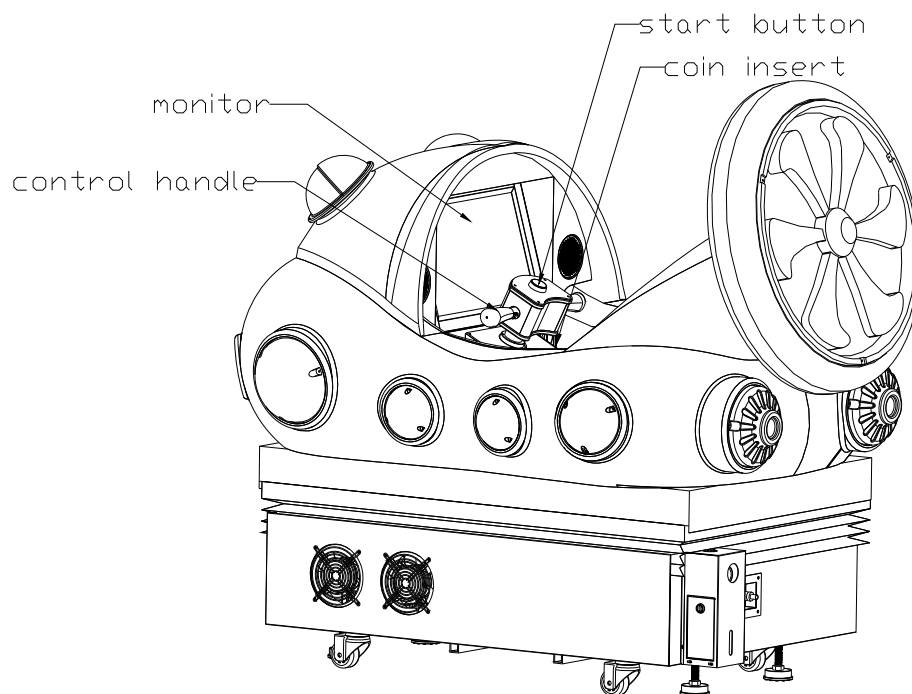
Operating income can be adjusted according to the situation.

## 2. Playing tips and Operations

Playing tips:

Ride on Nimo Boat and insert coin, press the green button to start game.

Press the button on handle for shooting and turn the wheel to avoid the stone.



### 3. TECHNICAL PARAMETER

VOLTAGE:: AC220V/110V (50/60HZ)

MAX. CURRENT: 7.5A/15A

(Note: please refer to the nameplate located on the back of the games to check actual usage of voltage.)

MAX. POWER: 1650W

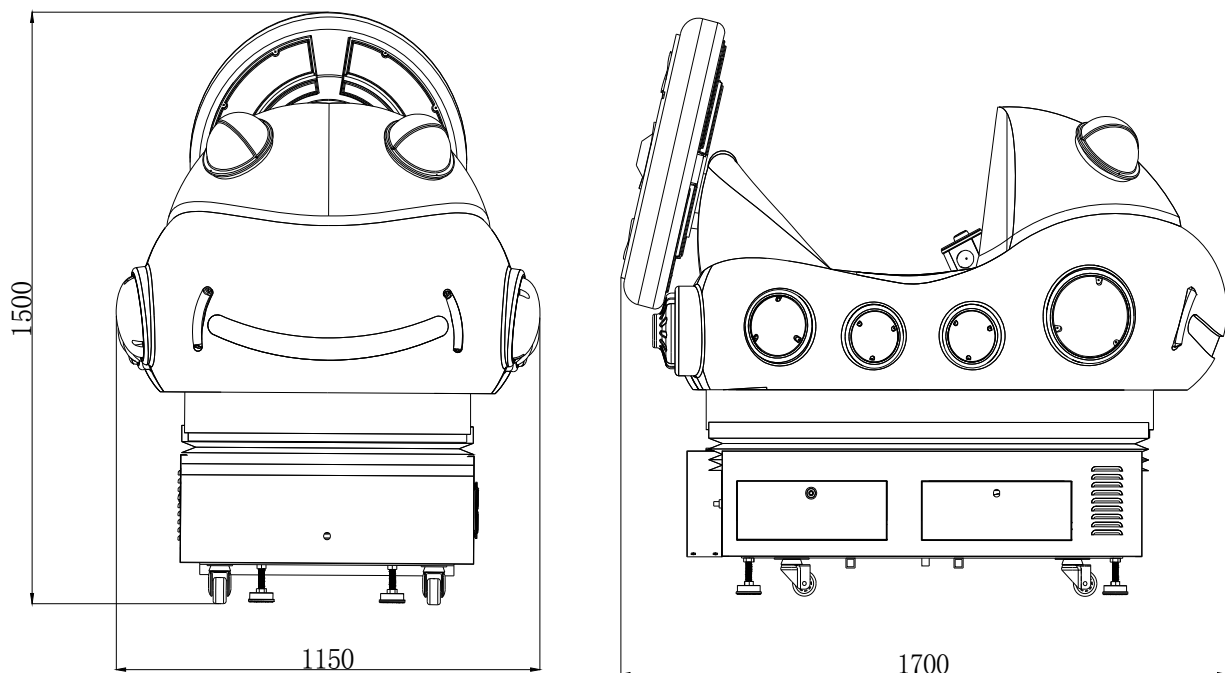
COIN SIZE:  $\phi$ 21mm ~  $\phi$ 30mm (diameter)

1.2mm ~ 2.5mm (thickness)

CAPACITY OF COIN BOX : 1000pcs of coins with coin size  $\phi$ 25mm\*1.5mm



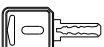



LOCATION REQUIRED: -5 ~ 40°C, humidity is less than 90%. No contact with any corrosive liquid, no any greasiness and dirt.

DIMENSIONS: L1700mm\*W1150mm\*H1500mm



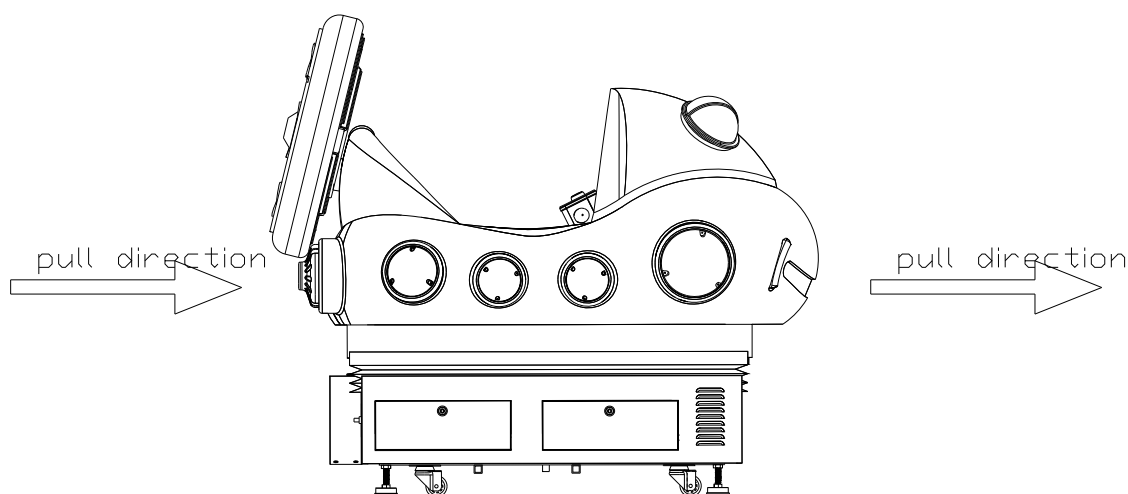


Parts shipped with the game:

1		LED	Green	2
2		Micro switch		2
3		Key	1285 #	2
4		Key	1396 #	2
5		Power cord		1
6		Manual		1

## 4. Movement

Direction of movement diagram:



Method of movement:

Move the game as above:

Note: Please pay attention to the strength when the road is not smooth to avoid damage for the air bag.

### WARNING

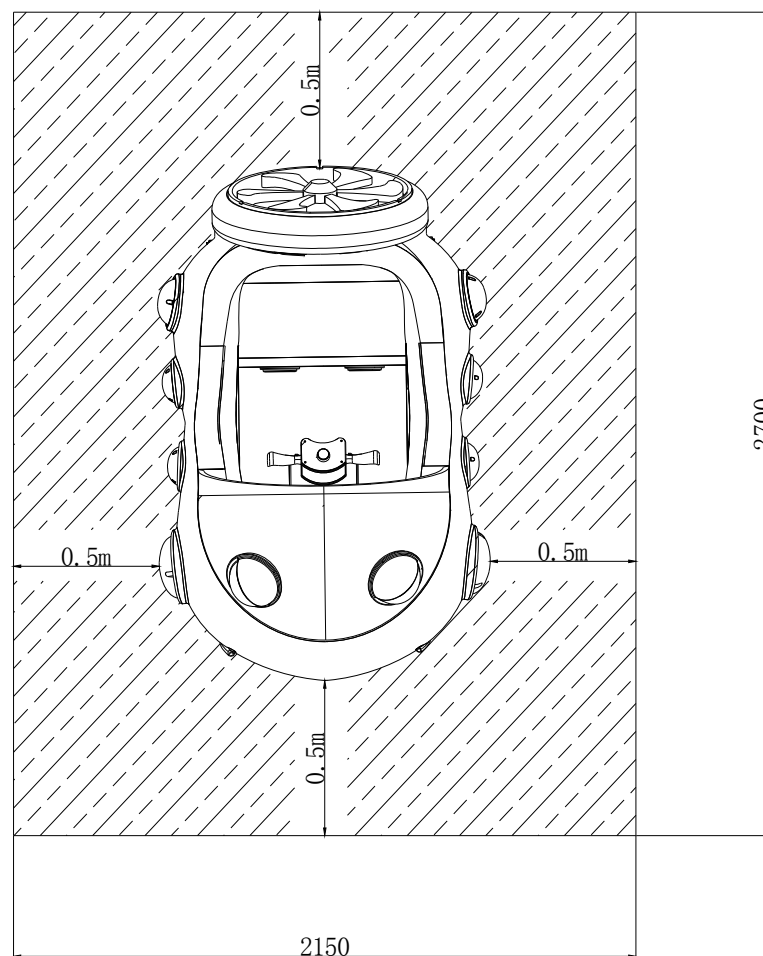
- ⌚ Please power off the game first and pull out the cord, then move the game.
- ⌚ Please do not carefully move, turnover, transport the game; otherwise it will destroy the game.
- ⌚ Prevent hitting, rubbing the games when move the games, otherwise it will damage the appearance of the game.

## 5. INSTALLATION

Please follow the direction below to install the game.

### 5.1 CHOOSE THE LOCATION FOR INSTALLATION

- 1) Put the Nimo Boat in the same type of Kiddie Ride with monitor then select the concrete placement machine according to the machine's exterior.
- 2) Choose the proper location for installation, please follow the below drawing to install.



**WARNING:** It must be placed on the flat floor to make the machine on

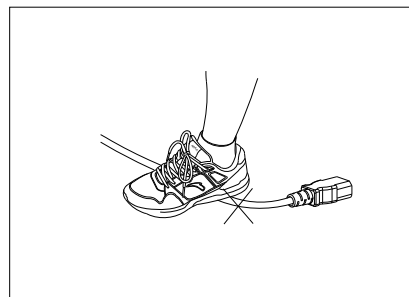
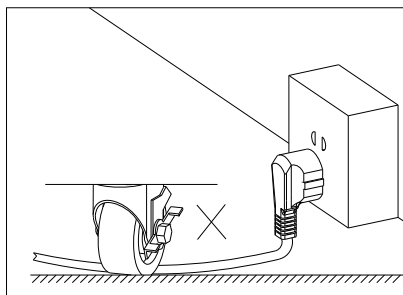
the ground steadily.

## 5.2 CHECK AND SET BEFORE CONNECTING THE POWER

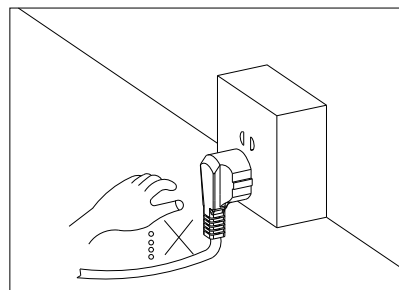
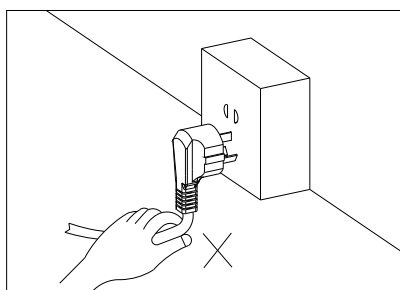
- 1) Please check whether the parts of cabinet are loose caused by moving, the wire terminal should not drop out from the port.
- 2) Check whether the GND is connected.
- 3) Please check whether the resistance of power input at the both ends for GND is more than 100 megohm.
- 4) Adjust the coin mech.
- 5) Connect the wires.

### Attention

A Please make sure the power cord is not pressed by wheel, foundation, etc. Otherwise, it will damage the wire to cause short circuit, even fire. Do not use strong power to extend and wring the wires. Do not make the wire be near to the high temperature object. Properly put the wire to avoid any kicking or treading.



Hold the plug to pull it out from the socket. Do not touch the plug with the wet hands.



### 5.3 CHECK AND ADJUST AFTER CONNECTING THE POWER

- 1) Make sure the input voltage is same as the one stated on nameplate on the back door of the game.
- 2) After connecting the power, please switch on the game.
- 3) Inserting coin to check if the coin machine can work properly.
- 4) Visually check the game and confirm the display and light can work properly.
- 5) Enter into the setting program and set the game settings ( include coin, game time, game levels, etc.)
- 6) Insert coin to play the game, confirm the operation of the direction and the machine movement is normal.
- 7) Check the sound if it is ok.

## 6. CHECK BEFORE OPERATION

Check the game before operation to prevent the game from working improperly when operated.

Checking item:

- 1) Check if the cord is securely plugged in and without defects.
- 2) Check the location of the game.
- 3) Check if the game case is without defects or burrs.
- 4) Check if the game without dirt and properly stuck on with marks.

## 7. DAILY OPERATION

### 7.1 INPUT POWER TO OPERATE

- 1) Turn on the machine power switch.
- 2) Visually check the game and confirm the display can work properly.
- 3) Check the sound if it is ok.
- 4) Confirm the coin mech, operation of the direction and the machine movement is normal.

Warning: Before operation, please confirm all the items above are ok.

### 7.2 CHECK AFTER OPERATION

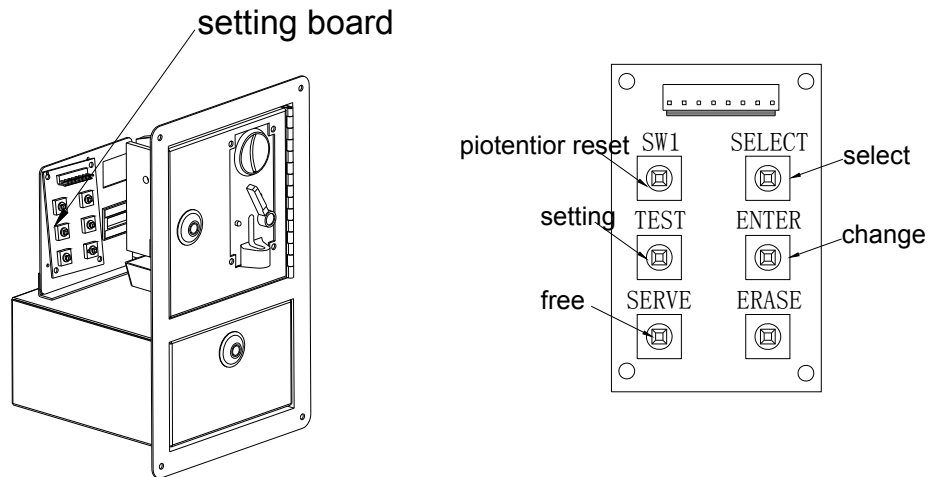
- 1) Check the display of the game and confirm it is proper.
- 2) Double check the coin mech, operation of the direction and the machine movement is normal, if it has any problems, please solve the problem as soon as possible.

### 7.3 COLLECT COINS AND KEEP RECORD

- 1) Switch off the power and open the door of the coin box to take out the coins.
- 2) Open the door of the coin mech to keep a record of the coins' quantity.

## 8. GAME SETTING

### 8.1 KEYS FOR SETTING



TEST: Enter into the setting menu or skip to the next menu.

SELECT: Select the setting content.

ENTER: Change the setting.

SERVE: Free to play.

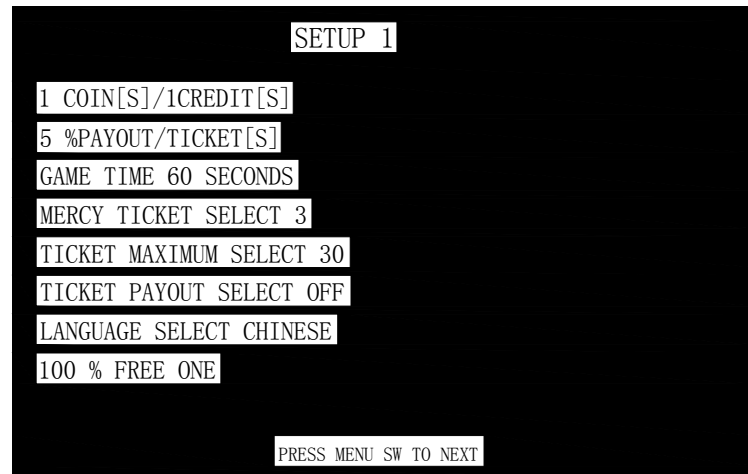
SW1: Reset for control rod.

### 8.2 SETTING METHOD

Setting method: press "TEST" to enter into the game setting menu → press the "TEST" to choose the setting item → press "ENTER" to change the setting → press "ENTER" exit setting.

## 8.3 SETTING DESCRIPTION

### 1) Game setting interface:



#### Descriptions:

**COIN:** this setting can decide how many coins player should insert for one game. If setting "1", it means insert 1 coin for 1 game.

**TICKET:** this setting is decide the percentage of ticket. If setting for 5% issue 1 ticket that means the prize of 50%, machine can issue 10 tickets.

**TIME:** this setting decides the limit time for one game. If setting 60 seconds, it means has 60 seconds for one game.

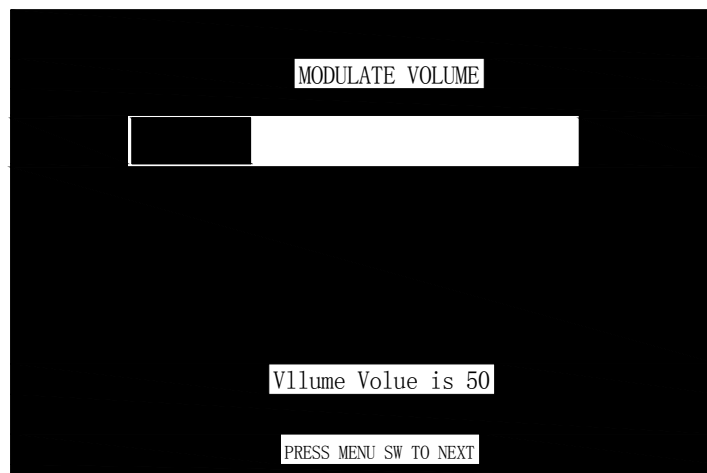
**Comfort ticket:** this setting is decides when player have no score, if setting by 3 tickets, machine will issue 3 tickets.

**TICKET / NO TICKET:** this setting is decide have issue ticket or not, if setting ticket out, machine will issue ticket (note:this machine no function for ticket).

Language: This setting decides which language will be displayed in screen, Chinese or English.

FREE PLAY: this setting is decide the correct percentage to play one more time. If setting by 100%, player need to 100% correct can play one more time.

## 2) Data Setting:

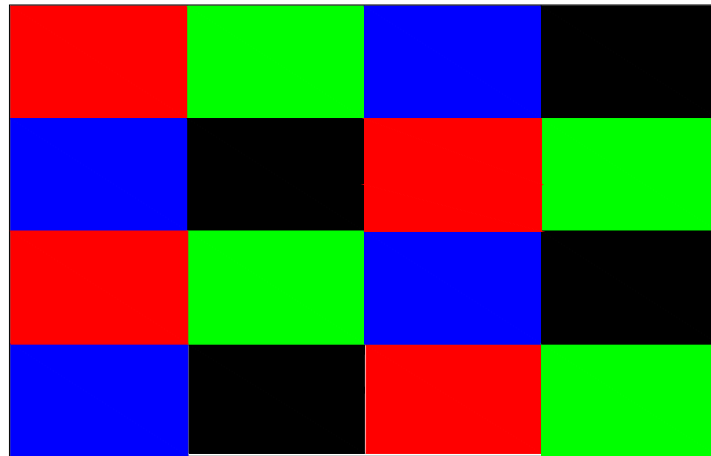


VOLUME: this setting can decide the volume and “1” stands for the lowest.

(Note: the volume can be adjusted by adjusting the volume potentiometer on the amplifier board.).

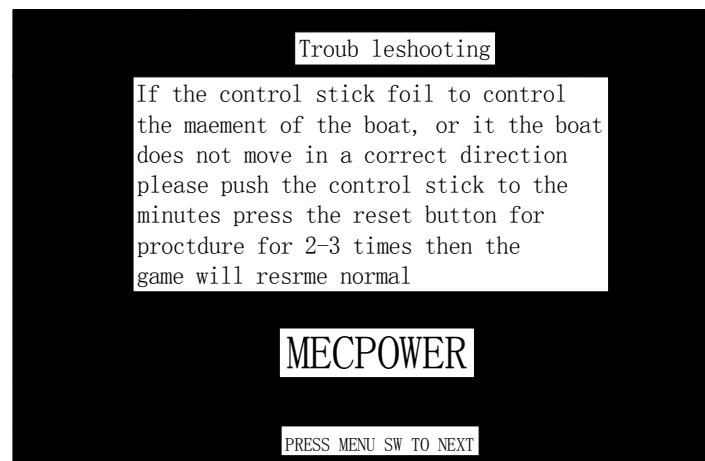


### 3) Display Testing:



Display testing: this is for test the LCD normal or not. When display shows no white that means LCD broken.

### 4) Trouble shooting



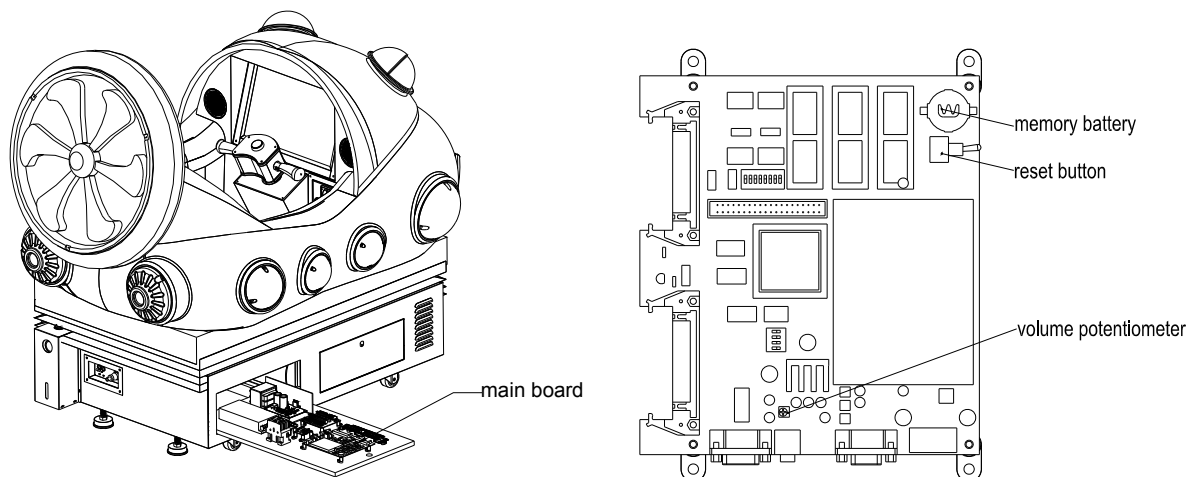
Trouble shooting: This is the solutions for control in normal.



choose the token more strictly.

## 9.2 MAIN BOARD ADJUSTMENT

Diagram of main board:



Descriptions:

Enulling Button: pressing this button can set the Game Setting to default and clear the data of Coin and Ticket saved in PCB

Volume Adjustment: Use a flat screwdriver to twist the volume potentiometer to adjust the volume level of the machine. Turning clockwise will increase the volume; counterclockwise will decrease the volume.

### warning

The battery can save the data of game settings and coin number when the the power off. Please replace the battery when the machine can not save the game setting.

## 10. CHECK AND MAINTAIN

! warning

Please check and maintain the game by technicians.

Please power off the game when check and maintain.

Please do not put any tools into cabinet, otherwise it will cause problem.

After checking, please tightly screw the screws and close the door.

### 10.1 Daily Check

ITEM	DESCRIPTION
COIN MECH	Check whether the coin mech can work proper.
Handle	Check the handle can control the direction or not.
Shooting button	Check the button can shot or not.
Shake	Check the game can shake or not
Sound	Check whether the sound and the volume are ok.
Display	Check if the displayed colors are proper.
Temperature, humidity	Check if the temperature and humidity is proper.

### 10.2 Daily Maintenance

ITEM	DESCRIPTION
THE CABINET	Clean the cabinet with water and soft paper.
MONITOR	Clean the monitor with water and soft paper.
PCB	Sweep the dust and dirty in the board with small brush.

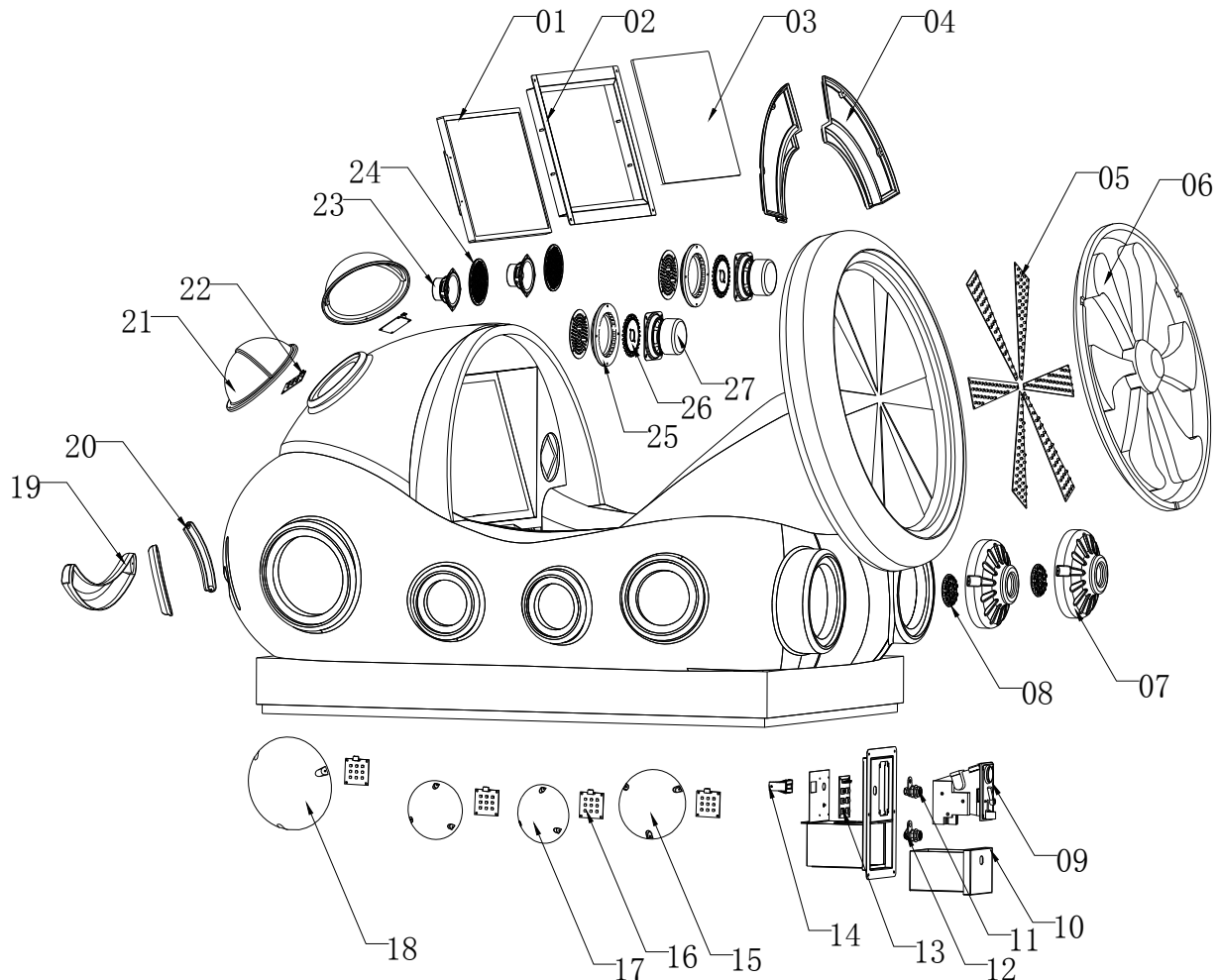
## 11. TROUBLESHOOTING

If you have any problem in installing or using the machine, we recommend that you first check the following table for possible cause of the problem and solution before asking for technical support.

PROBLEM	CAUSES	SOLUTIONS
Can not insert coin	no sample coin coin through the coin mech sensitivity for coin was adjusted too high coin mech is bad	insert sample coin  adjust the sensitivity  replace the coin mech
Lights do not light up	The wire of light is loose The light is bad The light's drive board is bad	Check the connection of light board. Replace the light Repair or replace the driver board.
Air compressor do not work	The wire is blocked The CAP is bad Air compressor is bad.	Connect the wire of air compressor. replace the CAP of air compressor. replace the air compressor
Airbag do not work	control valve blocked control valve is bad airbag is bad	connect the wire of control valve replace the control valve replace the airbag.
Direction control innormal	direction potentiometer blocked direction control do not reset potentiometer blocked	connect the wire of potentiometer press the reset button replace the potentiometer.
button no effect	The wire blocked switch is bad	connect the wire replace the switch
no display	The wire of LCD is loosen The wire of signal do not connect LCD is bad main board is bad	connect the wire connect the signal wire replace the LCD repalce the main board
no sound	The wire of speaker is loosen The volume is low speaker is bad	connect the wire of speaker adjust the volume replace the speaker
No movement after powering on the game	No AC110V/220V input The fuse is burnt. No output voltage of power supply The main board is bad.	Check the connection. Replace the fuse. Repaire or replace the power supply. Replace the main board.

## 12. DIAGRAM FOR MAIN PARTS AND PARTS LIST

### 12.1 Nimo Boat Body

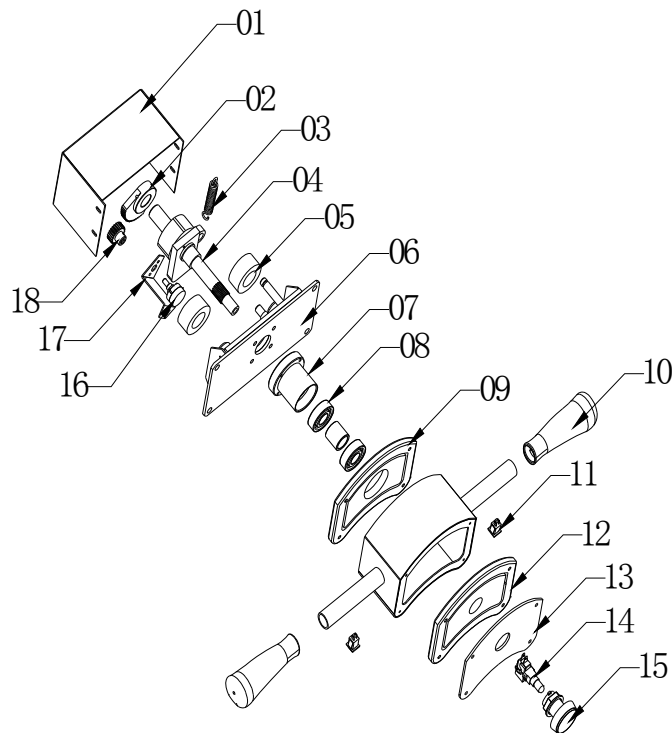


#### PART LIST:

N0.	name/number	piece
01	19" monitor	1
02	19" monitor shape	1
03	monitor glass	1
04	ABS plate	4
05	trigel light board	6
06	rotating ABS	1
07	backlight cover	2
08	flahing light	2
09	coin mech	1
10	coin box	1
11	key 1285	1
12	key 1396	1
13	setting board	1
14	meter	1
15	side cover (middle)	2

N0.	name/number	piece
16	flashing board	8
17	side cove (small)	2
18	side cover (big)	2
19	bent cover 1	1
20	bent cover 2	2
21	eye cover	2
22	flashing light board	2
23	speaker 3寸	2
24	speaker net 3.5寸	2
25	speaker arylic	2
26	speaker flashing light	2
27	speaker 4.5寸	2

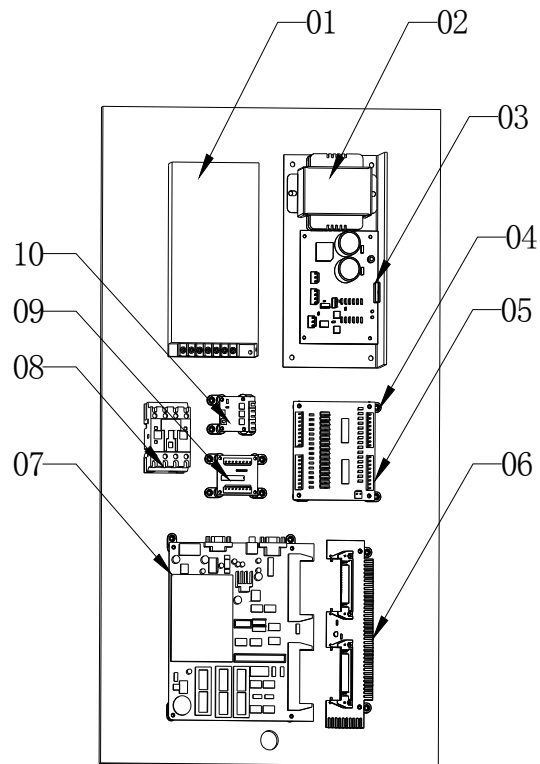
## 12.2 CABINET AND PART LISTS:



NO.	name/number	piece
01	controller cover	1
02	shape gear	1
03	spring	1
04	control rod	1
05	rubber	2
06	control frame	1
07	bear fix part	1
08	bearing	2
09	control arylc 1	1
10	rod rubber	2

NO.	name/number	piece
11	round button switch	1
12	control arylc 2	1
13	control arylc 3	1
14	long micro-switch	1
15	small button	1
16	potentiometer	1
17	potentiometer fix part	1
18	potentiometer gear	1

### 12.3 CIRCUIT BOARD AND PART LIST:

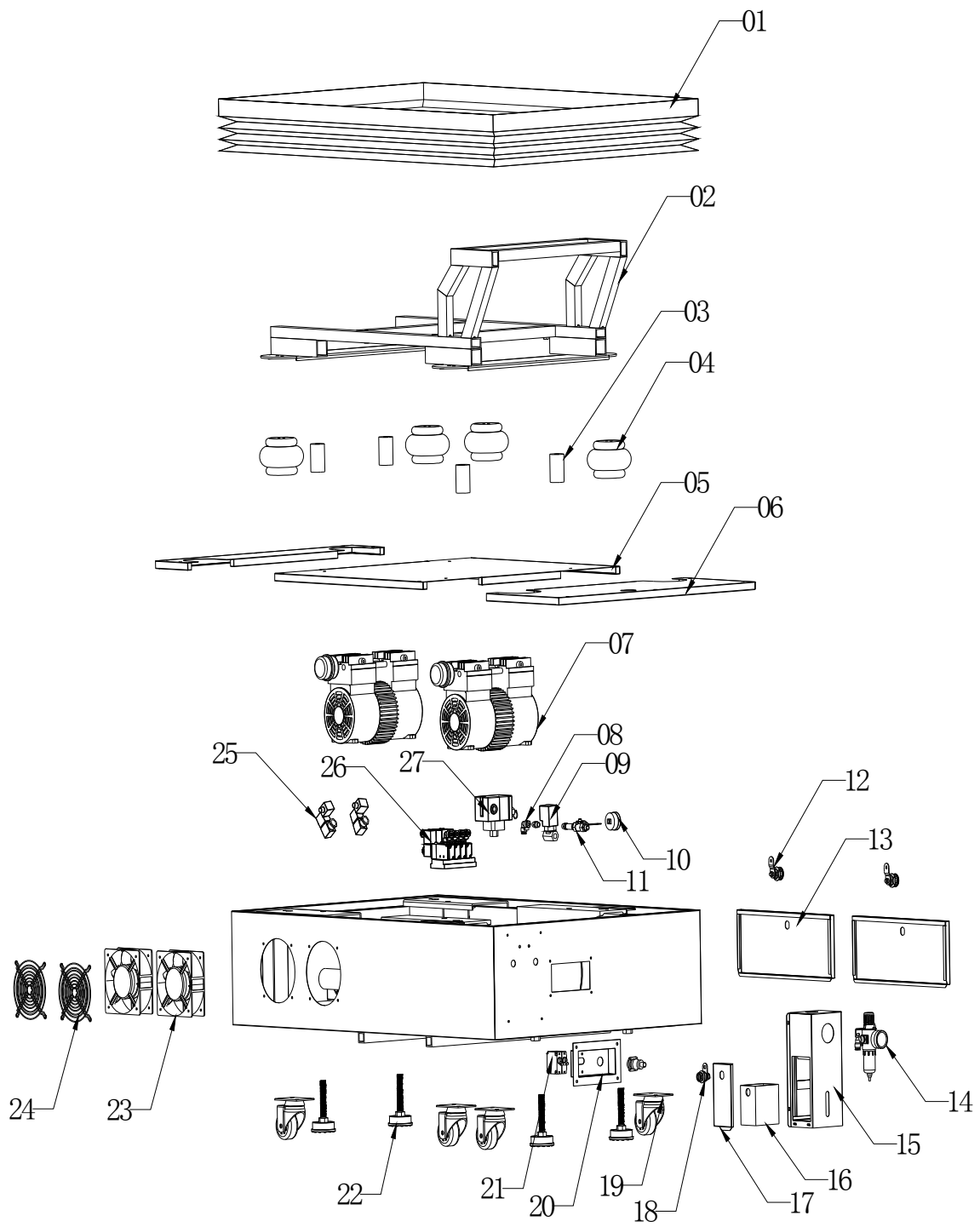


NO.	name/number	piece
01	power box 12V11A 5V3A	1
02	transformer 220V/18V 80W	1
03	amplifier MP91A	2
04	PCB rubber feet	1
05	enlarge board	1
06	connect board	1
07	main board LP424	1
08	AC connectaor	1

NO.	name/number	piece
09	transformer board	2
10	three light drive board	1

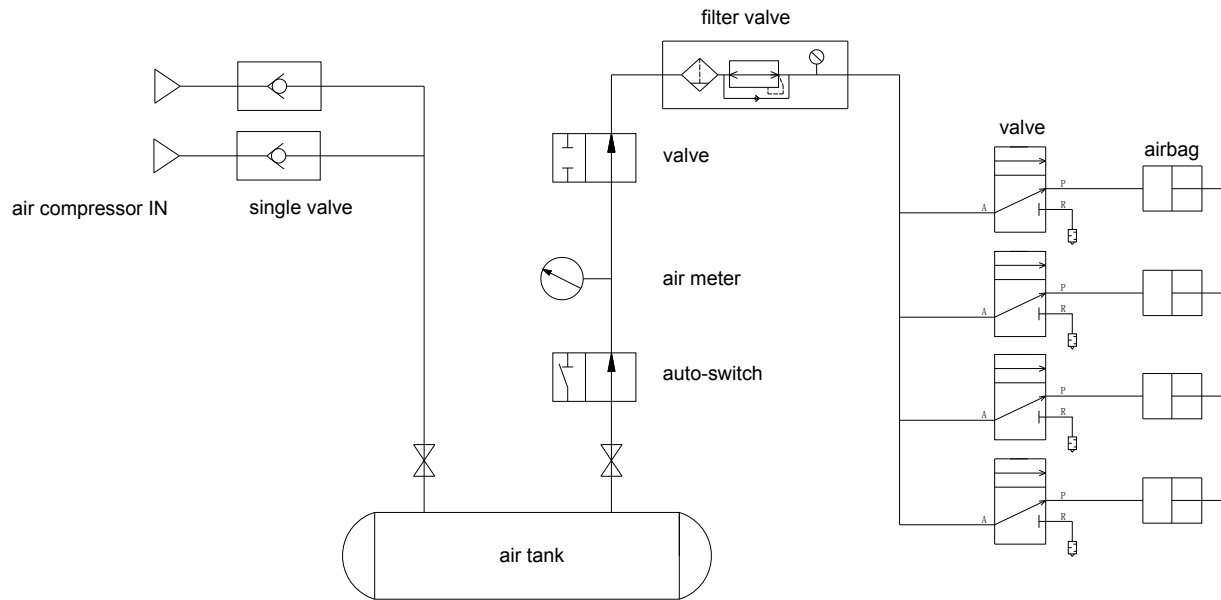


## 12.4 CHASSIS AND PART LIST:





# 13. CIRCUIT DIAGRAM



# 14. SCHEMATIC DIAGRAM

